

ELITE LINE

Residential windows
and doors





ESWindows Advantages

- Ideal for single-family homes
- Meets the nation's toughest hurricane requirements for South Florida's High Velocity Hurricane Zone
- Large and small missile impact rated
- Glazing styles including colonial, brittany or full view
- Flat or OG muntins inside and/or outside
- Thick aluminum framing for superior thermal resistance and durability
- Framing features, high performing T5 and T6 aluminum alloys
- High-performance energy-efficient Low-E glass options by Tecnoglass
- Heat strengthened glass as a standard feature
- Corrosion-resistant hardware and fasteners as a standard with stainless steel options
- Flush frame for retrofit and concrete construction and fin frame for wood construction
- Anodized, painted or wood grain finishes available
- Custom sizes delivered in 3-5 weeks
- Screens feature aluminum frames and fiberglass mesh

ESW impact-rated windows will help:

- Protect the integrity of the home during a hurricane
- Improve the energy efficiency of your property
- Reduce exposure to harmful UV rays
- Improve the appearance of your home through architectural styles and finishes
- Improve the resale value of your property
- Meet the insurance eligibility requirements for your home
- Prevent forced entry 24/7
- Reduce external noise
- Reduce heat transmittance

TE

LINE

Elite Features

- Polycron paint and anodized finish
- 10-year SGP warranty
- 5-year PVB warranty
- Standard colors available
- Superior energy performance with low U-values
- Reduced sound transmission
- Exclusive corrosion-resistant hardware for coastal areas

The E-Line from ESWindows is the ideal solution for any homeowner who wants to blend comfort with modern design. It features superior thermal performance and an impeccable, clean design with no visible installation anchors. A wide variety of options, including fixed, single hung and sliding windows as well as swing and sliding doors, are available to meet specific design intents and performance needs. The E-Line will satisfy the style needs of the most demanding homeowners.



The Elite quality standard





The Elite line of high-quality windows and doors was developed by our experienced team of engineers and designers to meet the needs of homeowners, contractors and homebuilders. We offer durable, efficient and affordable products that withstand the stringent Miami-Dade County protocols.

With more than 30 years of experience as a window and door manufacturer, ESWindows has earned a reputation for providing reliable products that meet today's modern aesthetics, in an environmentally friendly combination that helps homeowners reduce energy costs.

WINDOWS

EL-100

Single Hung Window

EL-150

Fixed Window

EL-200

Horizontal Roller / Sliding Window

ES-5000

Casement Window

DOORS

EL-300

French Door / Swing Door

EL-400

Sliding Glass Door

ELITE
LINE

WINDOW

EL-100

The EL-100 is a single-hung window that easily adapts to any design specification. It satisfies the most demanding construction and architectural standards for security, strength and durability.

This product is designed for narrow openings. Single hung systems are known for their excellent water intrusion performance.

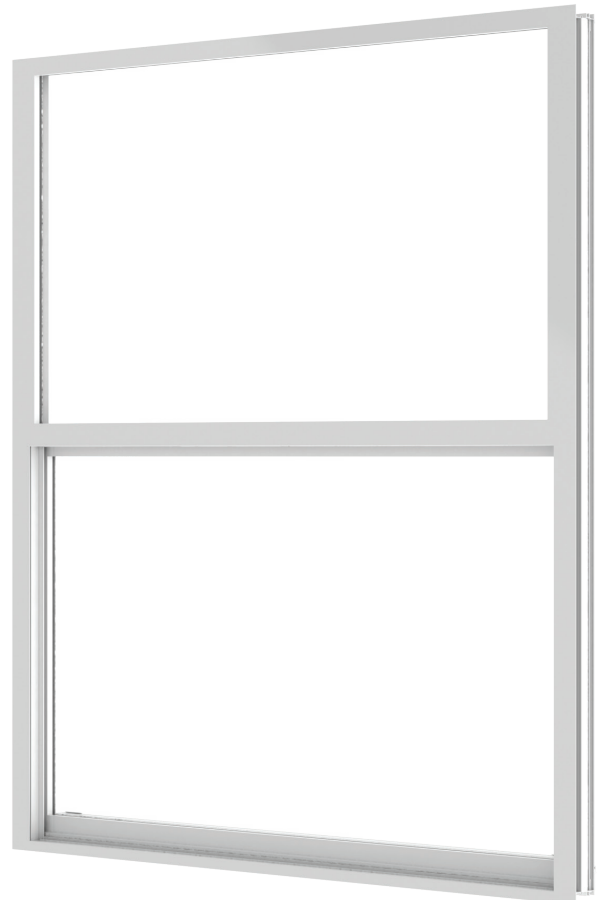


System Description

- Large missile impact rated
 - 3" Frame depth
 - Designed for multiple laminated interlayers or insulating laminated
 - Water infiltration: 12 psf
 - Design load: +80/-80 psf large missile impact
 - Maximum size: 53 1/8" x 76"
 - U-value:
 - 0.49 IGU (with 1/8" N70/38 Clear (#2) + 3/8" Air Spacer + 1/8" Clear + 0.09" PVB + 1/4" Clear Low-E (#6))
 - 0.96 LG (with 1/8" Clear + 0.09" PVB + 1/8" Clear)
 - Insulating laminated glass:
 - 1/8" + 3/8" Spacer + 1/8" + 0.09" Interlayer + 1/8"
 - 1/8" + 5/16" Spacer + 1/8" + 0.09" Interlayer + 1/4"
 - Laminated glass:
 - 1/8" + 0.09" Interlayer + 1/8"
 - 1/8" + 0.09" Interlayer + 1/4"
 - Configuration O/X
 - Standard egress size:
 - 25 5/8" x 98" for the minimum window width (*)
 - 39 3/4" x 64" for the minimum window width (*)
- * Standard sill and 4" sash window stop

Features

- Block and tackle or ultra-lift balances
- Bottom spring latch or sweep lock
- Flange frame for masonry, fin frame for wood construction or flush frame for concrete opening



WMS

EL-150

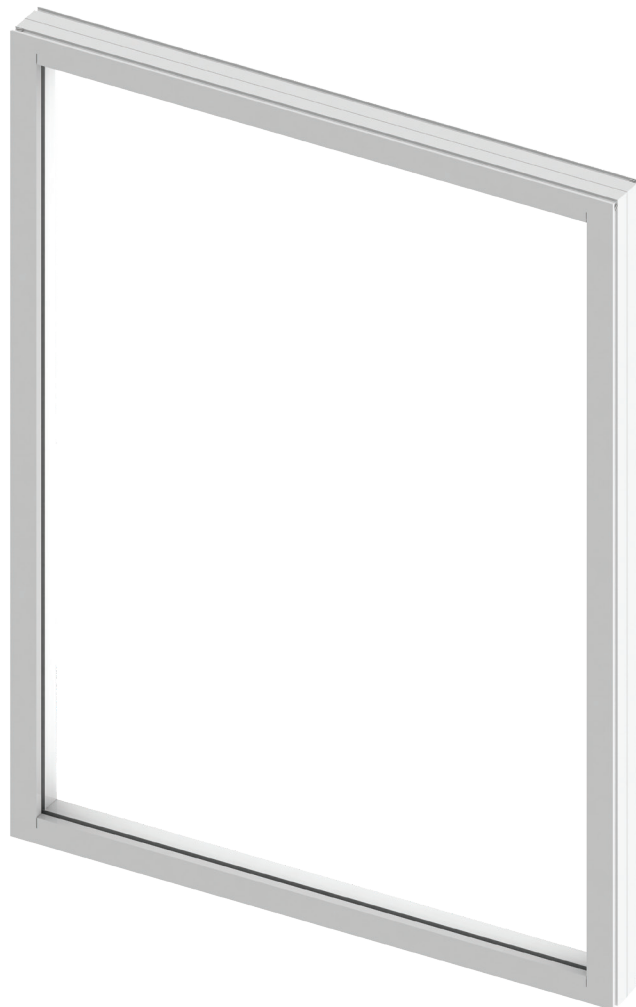
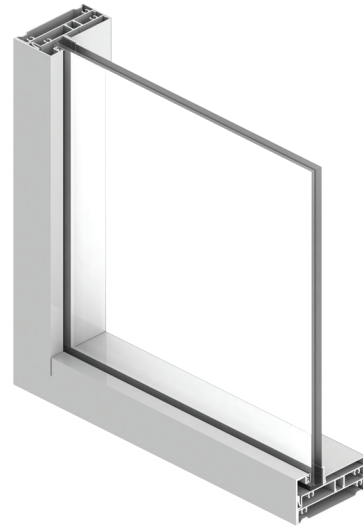
The EL-150 is a fixed window available in a variety of shapes to meet a wide range of applications. This window is used to bring light to places with difficult accessibility.

System Description

- Large missile impact rated
- 3" Frame depth
- Water infiltration: 12 psf
- Design load: +80/-80 psf large missile impact rated
- U-value:
 - 0.46 IGU (with 5/32" N70/38 Clear (#2) + 5/16" Air Spacer + 5/32" Clear + 0.075" PVB + 5/32" Clear Low-E (#6))
 - 1.01 LG (with 3/16" Clear + 0.09" PVB + 3/16" Clear)
- Insulating laminated glass
 - 1/8" + 5/16" Spacer + 1/8" + 0.09" Interlayer + 1/4"
 - 5/32" + 5/16" Spacer + 5/32" + 0.09" Interlayer + 5/32"
- Laminated glass
 - 1/8" + 0.09" Interlayer + 1/4"
 - 3/16" + 0.09" Interlayer + 3/16"
- Standard egress size: 35 5/8" x 64" and 25 5/8" x 88 1/2"

Features

- Flange frame for masonry, fin frame for wood construction or flush frame for concrete openings
- Architectural shapes available
- Minimum radius: 14"
- Saflex PVB, Kuraray PVB, Vanceva Storm and SentryGlas Plus interlayer options



WINDOW

EL-200

The EL-200 is a horizontal sliding window. This product is designed to ensure smooth, easy operation to allow maximum ventilation. EL-200 can be used for a wide variety of applications.

System Description

- Large missile impact rated
- 3" Frame depth
- Configurations: XO, OX or XOX. (1/4, 1/2, 1/4, 1/3, 1/3, 1/3)
- Designed for multiple laminated glass options
- Water infiltration: 12 psf large missile impact rated
- Design load: 80/90 psf large missile impact rated
- Maximum size: 111" x 63" XOX
- U-value:
 - 0.48 IGU (with 1/8" N70/38 Clear (#2) + 5/16" Air Spacer + 1/8" Clear + 0.75" PVB + 1/4" Clear Low-E (#6))
 - 1.0 LG (with 1/8" Clear + 0.09" PVB + 1/8" Clear)
- Insulating laminated glass
 - 1/8" + 3/8" Spacer + 1/8" + 0.09" Interlayer + 1/8"
 - 1/8" + 5/16" Spacer + 1/8" + 0.09" Interlayer + 1/4"
- Laminated glass
 - 1/8" + 0.09" Interlayer + 1/8"
 - 1/8" + 0.09" Interlayer + 1/4"
- Egress Size: 72 3/8" X 30 1/8" and 52" X 42 1/8"

Features

- Polyamide rollers with needle bearings
- Spring latch at jamb or sweep lock options
- Flange or fin frame for masonry and wood construction, flush frame for concrete openings
- Saflex PVB, Kuraray PVB, Vanceva Storm and SentryGlas Plus interlayer options



ES-5000

The ES-5000 is a 2 1/8" impact rated, casement window featuring a roto-type handle for an effortless operation. It is available in multiple glazing options providing flexibility in design.

System Description

- Large missile impact
- 2 1/8" Frame depth
- Configurations: X, XX
- Designed for laminated and insulating glass options
- Water infiltration: 13.5 psf
- Design load: +90/-90 psf
- Maximum size: 37" x 74" X; 74" x 74" XX
- U-value: 0.64 (with 5/32 SB70XL – Air Spacer – 1/8 Clear – 0,90 PVB – 5/32 Clear) Low-E (#6)

Features

- Single arm operator and multi-point lock
- Heavy duty stainless steel four bar hinge
- Flange frame for masonry and wood construction or flush frame for concrete openings
- Screens available in aluminum frame and fiberglass mesh
- Surface applied OG or flat muntins
- Folding crank handle



DOORS

EL-300

The EL-300 is a french door with a 1 3/4" panel depth. This product is ideal for balconies and exit-to-open spaces such as patios and pool areas.

System Description

- Large missile impact rated
- Out-swing motion
- 1 1/2" x 4" frame
- Configurations: X, XX, O/XX/O
- Water infiltration: 12 psf
- Design load: +80/-80 psf
- Maximum size: 76" x 96" XX configuration
- U-value:
 - 0.70 IGU (with 3/16" N70/38 Clear (#2) + 5/16" Air Spacer + 3/16" Clear + 0.090" PVB + 3/16" Clear)
 - 1.03 LG (with 3/16" Clear + 0.09" PVB + 3/16" Clear)
- Insulating laminated glass: 3/16" + 3/8" Spacer + 3/16" + 0.09" Interlayer + 3/16"
- Laminated glass: 3/16" + 0.09" Interlayer + 3/16"
- Minimum width for accessibility is 72 13/16" on a two panel door
- Configuration: X
- Door width: 38 3/16"
- Sill height: 1 1/2"
- ADA sill: 1/2"

Features

- Wide variety of hardware options including three-point lock, heavy-duty hinges, lever handles, deadbolts, etc.
- High bottom rail and high sill optional
- Self-mating sidelites
- OG muntins
- Saflex PVB, Kuraray PVB, Vanceva Storm and SentryGlas Plus interlayer options



EL-400

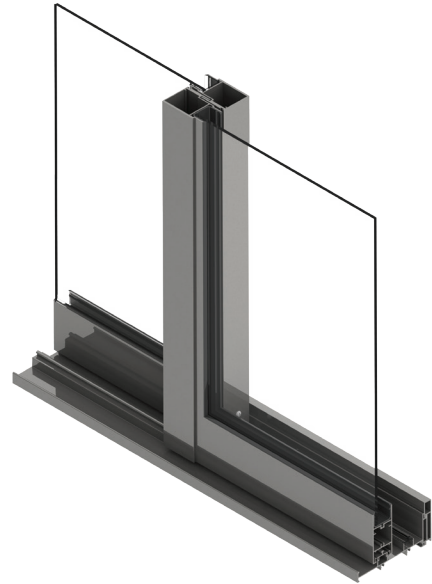
The EL-400 is a sliding glass door with a 4 9/16" frame profile. This product meets the most stringent specifications and with its attractive design and three-track frame, is ideal for a wide range of applications.

System Description

- Large missile impact rated
- 4 9/16" Frame depth
- Configurations: XO, OX, XX, OXO, OXXO, XXXX, OXXXXO
- Water infiltration: 12 psf
- Design load: +80/-80 psf
- Maximum size: 288" X 108"
- U-value:
 - 0.52 IGU (with 3/16" N70/38 Clear (#2) + 3/8" Air Spacer + 3/16" Clear + 0.090" PVB + 3/16" Low-E (#6))
 - 1.04 LG (with 3/16" Clear + 0.09" PVB + 3/16" Clear)
- Insulating laminated glass: 3/16" + 3/8" Spacer + 3/16" + 0.09" Interlayer + 3/16"
- Laminated glass: 3/16" + 0.09 Interlayer + 3/16"
- Minimum width for accessibility is 75 5/8 on OX/XO configuration and 81 7/8 on XX configuration

Features

- Adjustable tandem polyamide needle bearing rollers
- Three track and four track frame option
- Saflex PVB, Kuraray PVB, Vanceva Storm and SentryGlas Plus interlayer options
- Pocket configuration available



COLORS AND FINISHES

Standard Colors

Polycron



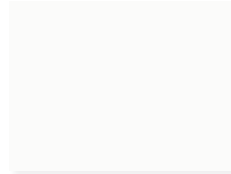
Polycron LG Bronze
UC107473



Polycron Arcadia Silver
UC70123F



Clear Anodized



Polycron ESP White
UC67122

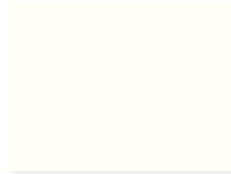
Hardware Finishes



Bronze



Silver



White

*Custom Colors Available

Service

Our engineers and designers provide customers with ongoing assistance and technical support to ensure the best solution for every project. We offer professional guidance to help customers pinpoint and balance their priorities. With this expert assistance, customers can plan and complete projects to achieve maximum benefits.

Engineering and Design

We offer the right solutions for the most complex projects and respond efficiently to the demands of architects and general contractors. We can deliver reliable, efficient and affordable products, due to a combination of advanced software technology and a leading team of expert engineers and designers, who specialize in aluminum, glass and window systems.

The Elite line provides customers a perfect combination of reliability, design and performance across a wide range of product types. Whether you are looking for noise reduction, temperature control, or protection from extreme weather, our line of products can provide the perfect performance solution, without sacrificing aesthetics.

ACCESSORIES

Design Elements

Every Elite window and door benefits from a combination of premium materials, cutting-edge production technology and the talent of an experienced team. All of these result in precise stylish designs that will endure over time.

EL-400 Roller



EL-100 & EL-200 Sweep Locks



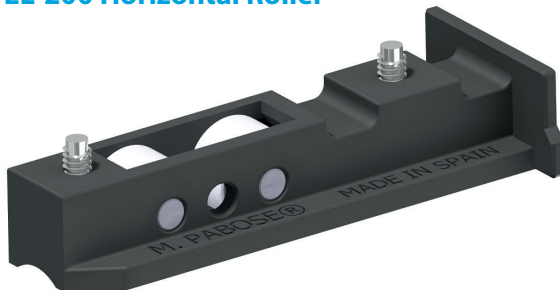
EL-100 & EL-200 Spring Latches



EL-400 Involute Handle



EL-200 Horizontal Roller



EL-300 Handle





Designed for
quality and efficiency



ELITE
LINE



ESWINDOWS
The Power of Quality

ELITE
LINE

The information contained herein is exclusive property of Tecnoglass Inc, who reserves the right to modify it, including but not limited to the designs and its specifications, without notice.
©2018 Tecnoglass Inc. All rights reserved.