

# MR-GLASS

Doors & Windows Manufacturing, LLC.



We are a company with 30 years of combined experience. Through such experience, we've learned that the best opportunity for growth, as a leading company, lies in the use of first-rate products, superior service, and customer satisfaction. Our goal consists of responding and providing service in a timely and courteous manner.

We take pride in the distinct quality of our craftsmanship and use only the best materials in the fabrication of our products. Our commitment is to our clients, products, and services. Through meticulous work and first-rate quality products, we manage to ensure our customers of our standing as an insuperable manufacturing company.

**MR-GLASS Doors & Windows Manufacturing, LLC.**

Impact Doors / Non-Impact Doors / Impact Storefronts / Non-Impact Storefronts / Impact Curtain Wall System / Glass Railing / Single Hung Windows / Horizontal Rollers / Sliding Glass Doors / French Doors



**sales@mrglasswindows.com • www.mrglasswindows.com**  
8120 NW 84<sup>th</sup> Street, Medley, FL 33166 • Ph: 305.470.8284 Fax: 305.470.8285

# SERIES MG-200

## Impact Resistant Single Hung



### Description

- Impact resistant single hung windows
- Frame profile is 2 7/8
- Design for residential, midrise and highrise applications
- Design loads (+80/-140 PSF)

### Frame

- White, Bronze, Clear Anodized and Kynar finish
- Woodgrain Colors Available

### Glass

- 7/16
- 5/16
- laminated & insulated
- low-e coatings

### Benefits

- No screws at the bottom up to +/- 80 PSF
- Friendly installation

### Features

- Maximum size 53 1/8x96"
- Equal Lites
- Proview

Florida Product Approval LMI FA: FL # 20352.1 SMI FL # 20352.2

CAD Drawings available online at [www.MrGlassWindows.com](http://www.MrGlassWindows.com)



sales@mrglasswindows.com • [www.mrglasswindows.com](http://www.mrglasswindows.com)  
8120 NW 84<sup>th</sup> Street, Medley, FL 33166 • Ph: 305.470.8284 Fax: 305.470.8285

# SERIES MG-275

## Non-Impact Commercial Door



### Description

- Aluminum profile is 1 3/4" x 4 1/2", door leaf profile is 1 3/4"
- Stainless steel assembly screws to avoid future corrosion
- Design loads +65.00, -75.00 PSF for single door or double door
- Maximum size for single door is 39 5/8" x 97 5/8", transom up to 120"
- Maximum size for double door is 75 5/8" x 97 5/8", transom up to 120"

### Frame

- Clear anodized, bronze anodized and white.
- Custom finish available upon request.

### Glass

- 3/16" tempered glass

### Features

- Corners are reinforced with aluminum brackets
- Covered anchors
- Variety of accessories including three point lock, concealed rod panic devices, push-pull tubular handles, overhead concealed or surface mounted closers, pivots and butt hinges
- Tested with panic hardware models from Regent and Jackson
- Out swing motion
- ADA threshold

### Benefits

- Decrease installation time
- Compatible with Series MG-4500 Non-Impact Storefront System
- Anchors are not visible, improving aesthetics



Dade County Notice of Acceptance (N.O.A) #16-1116.05

CAD Drawings available online at [www.MrGlassWindows.com](http://www.MrGlassWindows.com)

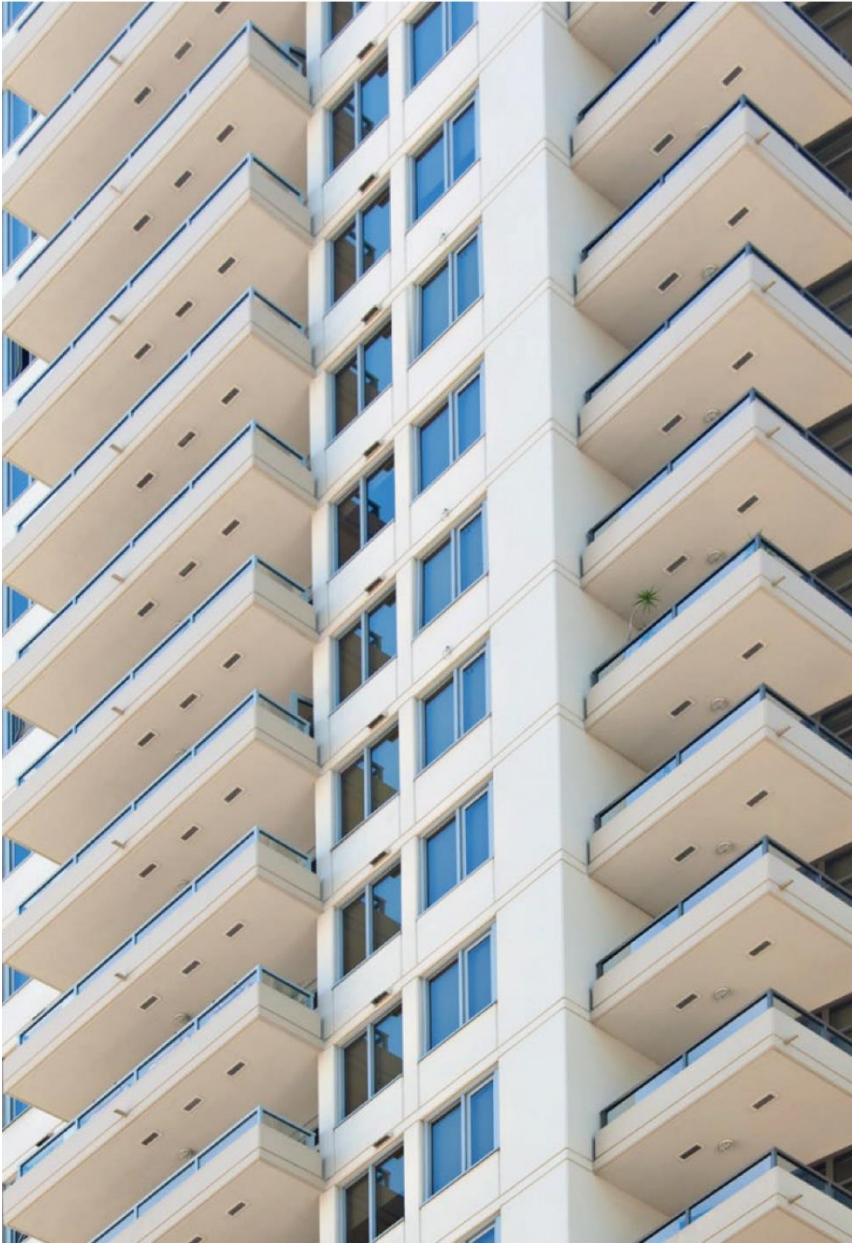


[sales@mrglasswindows.com](mailto:sales@mrglasswindows.com) • [www.mrglasswindows.com](http://www.mrglasswindows.com)

8120 NW 84<sup>th</sup> Street, Medley, FL 33166 • Ph: 305.470.8284 Fax: 305.470.8285

# SERIES MG-300

## Impact Resistant Horizontal Slider



### Description

- Oversided horizontal slider window
- Configuration XO/OX - 74" x 74" and 96" x 63"
- Unequal panels XO/OX - 89 3/4" x 74"
- 3 panels XOX - 127 5/8" x 74"
- Design loads (+90/-140 PSF)

### Frame

- White, Bronze, Clear Anodized and Kynar finish

### Glass

- 7/16
- 5/16
- laminated & insulated
- low-e coatings

### Benefits

Tested with different glass composition to accommodate residential, mid and highrise projects.



Florida Product Approval LMI FL # 20359.1 SMI FL # 20359.2

CAD Drawings available online at [www.MrGlassWindows.com](http://www.MrGlassWindows.com)



[sales@mrglasswindows.com](mailto:sales@mrglasswindows.com) • [www.mrglasswindows.com](http://www.mrglasswindows.com)  
8120 NW 84<sup>th</sup> Street, Medley, FL 33166 • Ph: 305.470.8284 Fax: 305.470.8285

# SERIES MG-400

Fixed (Picture Window)



## Description

- Impact resistance (LMI & SMI)
- Design loads DP=+/- 100 PSF
- Frame depth 2 15/16"
- Architectural shapes available

## Features

- Slim design that matches with the single hung and horizontal sliding window
- Flush adaptor for flush installation into concrete
- Flange design for wood buck installation
- Hidden Anchors
- Extensive shapes or archs and figures
- Possible to match infinite picture windows through aluminum mullion

## Glass Type

- 7/16" laminated w/ 0.09 PVB/SGP
- 1-3/16" glass insulated laminated
- High performance low-e coatings
- PVB or SGP as interlayer

## Standard Finishes

- Bronze
- White
- Silver

## Custom Finishes

- Kynar finish
- Wood-like finishes



Florida Product Approval LMI FA: FL #

SMI FL #

CAD Drawings available online at [www.MrGlassWindows.com](http://www.MrGlassWindows.com)



[sales@mrglasswindows.com](mailto:sales@mrglasswindows.com) • [www.mrglasswindows.com](http://www.mrglasswindows.com)

8120 NW 84<sup>th</sup> Street, Medley, FL 33166 • Ph: 305.470.8284 Fax: 305.470.8285

# SERIES MG-500

## Impact Resistant Commercial Door



### Description

- Aluminum profile is 1 3/4" x 5", door leaf profile is 2 1/4"
- Stainless steel assembly screws to avoid future corrosion
- Design loads +80/-120 PSF for single door
- Design loads +/- 90 PSF for double door
- Door leaf automatically glazed at factory to avoid water leaks
- Maximum size for single door is 47" x 110 1/2", transom up to 120"
- Maximum size for double door is 89" x 110 1/2", transom up to 120"

### Frame

- Clear anodized, bronze, white and wood grain
- Custom finish available upon request

### Glass

- 9/16" laminated or 1-1/8" insulated laminated, PVB or SGP interlayers
- Low-e coatings

### Features

- Corners are reinforced with heavy duty aluminum brackets and 8 welded points
- Variety of accessories including three point lock, concealed rod panic devices, push-pull tubular handles, overhead concealed or surface mounted closers and butt hinges
- Tested with the heaviest panic hardware models from Jackson, Adams Rite and Dor - O - Matic
- ADA, saddle and high threshold
- Single door is rated for water infiltration
- Covered anchors

### Benefits

- Designed for heavy duty traffic
- Decreased installation time
- Ensured glazing quality
- Compatible with Series MG-5000 Impact Storefront System
- Anchors are not visible, allowing for modern improving aesthetics
- Enhanced durability with a 2 1/4" thick profile



Florida Product Approval FL # 27001.1

CAD Drawings available online at [www.MrGlassWindows.com](http://www.MrGlassWindows.com)



[sales@mrglasswindows.com](mailto:sales@mrglasswindows.com) • [www.mrglasswindows.com](http://www.mrglasswindows.com)  
8120 NW 84<sup>th</sup> Street, Medley, FL 33166 • Ph: 305.470.8284 Fax: 305.470.8285

# SERIES MG-1000

## Impact Resistant Sliding Glass Doors



### Description

- Aluminum profile is 2 5/8" x 5 5/8" two track, door panel profile is 2 1/4 x 4"
- Stainless steel assembly screws to avoid future corrosion
- Design loads +120.00, -140.00 PSF large and small missile
- Door panel use wet glazing applied thru a computerized glazing machine to avoid water leaks
- Maximum size is 192" x 120"
- Configurations XO - OX - XX - XOX - OXO - OXXO

### Frame

- White, Bronze, Clear Anodized and Kynar finish

### Features

- 45° corner assembly
- Low sill raiser (2 5/8) up to +120 psf
- Anchor less jamb option up to 108"

### Glass

- 9/16" laminated or 1 3/16" insulated laminated
- low-e coatings

### Benefits

- Designed for high rise buildings
- Anchor are not visible, allowing for modern improving aesthetics

Florida Product Approval FL #19092.1 LMI - FL #19092.2 SMI

CAD Drawings available online at [www.MrGlassWindows.com](http://www.MrGlassWindows.com)



[sales@mrglasswindows.com](mailto:sales@mrglasswindows.com) • [www.mrglasswindows.com](http://www.mrglasswindows.com)

8120 NW 84<sup>th</sup> Street, Medley, FL 33166 • Ph: 305.470.8284 Fax: 305.470.8285

# SERIES MG-2530

## Glass Railing System



### Description

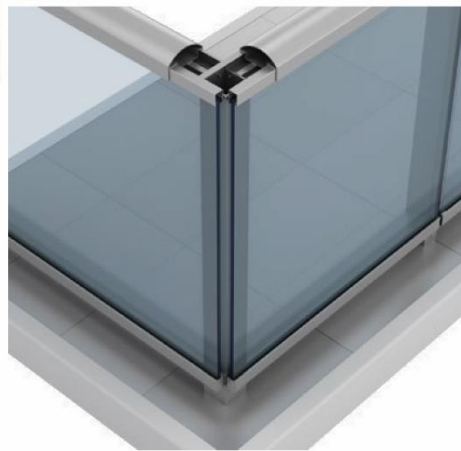
- Aluminum Glass Railing
- Design loads +/-110 PSF

### Frame

- Kynar finish, white or arcadia silver available
- Custom color available upon request

### Glass

- 7/16" laminated glass
- Outside butt joint glazing



Dade County Notice of Acceptance (N.O.A) #14-1022.02

CAD Drawings available online at [www.MrGlassWindows.com](http://www.MrGlassWindows.com)



[sales@mrglasswindows.com](mailto:sales@mrglasswindows.com) • [www.mrglasswindows.com](http://www.mrglasswindows.com)  
8120 NW 84<sup>th</sup> Street, Medley, FL 33166 • Ph: 305.470.8284 Fax: 305.470.8285



# SERIES MG-4500

## Non-Impact Storefront System



### Description

- Aluminum profile is 1 3/4" x 4 1/2"
- Stainless steel assembly screws to avoid future corrosion
- Design loads +/- 100 PSF

### Frame

- Clear anodized, bronze anodized and white in stock
- Custom finish available upon request

### Glass

- 1/4" tempered glass

### Features

- Pre-assembled
- Covered anchors

### Benefits

- Decreased installation time
- Compatible with Series MG-275 Non-Impact Door
- Anchors are not visible, allowing for modern aesthetics
- Design flexibility
- Excellent for interior office divisions



Dade County Notice of Acceptance (N.O.A) #16-116.04

CAD Drawings available online at [www.MrGlassWindows.com](http://www.MrGlassWindows.com)



[sales@mrglasswindows.com](mailto:sales@mrglasswindows.com) • [www.mrglasswindows.com](http://www.mrglasswindows.com)  
8120 NW 84<sup>th</sup> Street, Medley, FL 33166 • Ph: 305.470.8284 Fax: 305.470.8285

# SERIES MG-5000

## Impact Resistant Storefront Wall System



### Description

- Aluminum profile is 1 3/4" x 5"
- Stainless steel assembly screws to avoid future corrosion
- No anchors required on jambs, just top and bottom
- Design loads +80/-130 PSF large and small missile
- Storefront panels are automatically factory glazed to avoid water leaks
- Maximum Size for one lite 84" x 185"

### Frame

- Clear anodized, bronze, White and wood grain
- Custom finish on request

### Glass

- 9/16" laminated, PVB or SGP interlayers available
- Low-e coatings

### Features

- Pre-assembled and pre-glazed
- Arch shapes available
- Covered anchors

### Benefits

- Decreased installation time
- Ensured glazing quality
- Compatible with Series MG-500 Impact Door
- Anchors are not visible, allowing for modern aesthetics
- Design flexibility



Florida Product Approval FL # 27000.1

CAD Drawings available online at [www.MrGlassWindows.com](http://www.MrGlassWindows.com)



sales@mrglasswindows.com • [www.mrglasswindows.com](http://www.mrglasswindows.com)  
8120 NW 84<sup>th</sup> Street, Medley, FL 33166 • Ph: 305.470.8284 Fax: 305.470.8285

# SERIES MG-6000

## Impact Resistant Storefront Wall System



### Description

- Aluminum profile is 1 3/4" x 5"
- Front glazing
- Stainless steel assembly screws to avoid future corrosion
- No anchors required on jambs, just top and bottom
- Design loads +100/-145 PSF large and small missile
- Storefront panels are automatically factory glazed to avoid water leaks
- Maximum height is 144"
- Wide spans of 60x120" and 48x144"

### Frame

- Clear anodized, bronze, white and wood grain
- Custom finish on request

### Glass

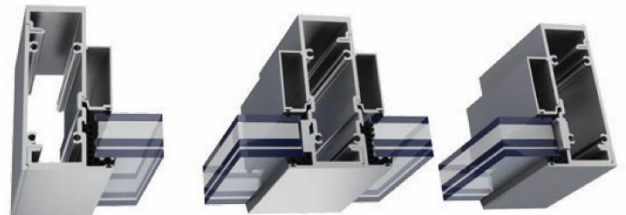
- 9/16" laminated or 1-5/16" insulated laminated, PVB or SGP interlayers available
- Low-e coatings

### Features

- Pre-assembled and pre-glazed
- Covered anchors

### Benefits

- Decreased installation time
- Ensured glazing quality
- Anchors are not visible, allowing for modern aesthetics
- Design flexibility



Florida Notice of Acceptance: FA: FL #18411.1

CAD Drawings available online at [www.MrGlassWindows.com](http://www.MrGlassWindows.com)



[sales@mrglasswindows.com](mailto:sales@mrglasswindows.com) • [www.mrglasswindows.com](http://www.mrglasswindows.com)

8120 NW 84<sup>th</sup> Street, Medley, FL 33166 • Ph: 305.470.8284 Fax: 305.470.8285

# SERIES MG-7000

## Impact Resistant Curtain Wall System



### Description

- Aluminum profile is 2 ½" x 7 ¼"
- Stainless steel assembly screws to avoid future corrosion
- Anchoring clips only top and bottom
- Design loads +/- 100 PSF large and small missile
- Infinite height with intermediate anchor 150"

### Frame

- Clear anodized, bronze and white available
- Custom finish on request

### Glass

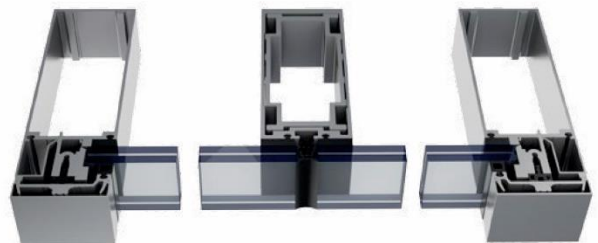
- 9/16" laminated and 1-5/16" insulated laminated, SGP interlayer
- Low-e coatings

### Features

- Shear block construction
- Butt joined glass at mullion or with pressure plate

### Benefits

- Compatible with Series MG-500 impact door
- Design flexibility



Florida Product Approval FL # 27101.1

CAD Drawings available online at [www.MrGlassWindows.com](http://www.MrGlassWindows.com)



[sales@mrglasswindows.com](mailto:sales@mrglasswindows.com) • [www.mrglasswindows.com](http://www.mrglasswindows.com)  
8120 NW 84<sup>th</sup> Street, Medley, FL 33166 • Ph: 305.470.8284 Fax: 305.470.8285

# SERIES

Postless Railing for Impact Rated and Non-Impact



## Description

- Impact resistance (LMI) railing
- Aluminum Shoe 4: wide
- Design loads DP=+/- 160 PSF (LMI). DP=+/- 60 for non-impact zone
- Glass type: Laminated 3/8" = 0.06 SGP + 3/8"
- Max height: 44 1/2" In impact zone (HVHZ) or 48" in non-impact zone
- Max. Glass width: 70"
- Stainless steel cladding in different GA and shapes

## Glass Type

- 3/4" F.T. laminated composed by: 3/8" FT + 0.06 SGP + 3/8" FT
- Test Report Available

## Features

- Top mounted
- Curved glass and shoe available
- Multiple substrates
- Glazing using high strength SIKA two parts resin (LMI Rated) or a combination of CRL's taper lock w/structural silicone (non-impact zone)
- Stainless steel cap

## Standard Finishes

- Alum. Shoe in mill finish or alodine w/cladding in stainless steel or painted aluminum
- Railing cap in stainless steel 304 or 316

CAD Drawings available online at [www.MrGlassWindows.com](http://www.MrGlassWindows.com)



[sales@mrglasswindows.com](mailto:sales@mrglasswindows.com) • [www.mrglasswindows.com](http://www.mrglasswindows.com)

8120 NW 84<sup>th</sup> Street, Medley, FL 33166 • Ph: 305.470.8284 Fax: 305.470.8285

# SERIES 1100

## Multitrack Sliding Glass Door



### Description

- Impact resistance (LMI & SMI) up to 6 panels on 3 tracks
- With or without screen
- Design loads DP=+/- 100 PSF
- Frame depth 5 1/4"
- Unanchored jambs
- Maximum dimensions: 288" x 120" or 360" x 96" (FW x FH)

### Features

- Very robust door with anchorless jambs
- Panels made of one extrusion mitered cut
- PMO (acetal) wheels on stainless steel housing and bearings tested to 25000 cycles
- 2 5/8" sill height without riser up to +75/-100 PSF
- Hidden drainages for enhanced appearance
- Reinforced astragal above 9'-0"
- Optional raised grid for design freedom

### Glass Type

- 9/16" laminated w/ 0.09 PVB/SGP
- 1-5/16" glass insulated laminated
- High performance low-e coatings

### Standard Finishes

- Bronze
- White
- Silver

### Custom Finishes

- Kynar finish
- Wood-like finishes



Florida Product Approval LMI FA: FL # 25959.1 SMI FL # 25959.2

CAD Drawings available online at [www.MrGlassWindows.com](http://www.MrGlassWindows.com)



[sales@mrglasswindows.com](mailto:sales@mrglasswindows.com) • [www.mrglasswindows.com](http://www.mrglasswindows.com)

8120 NW 84<sup>th</sup> Street, Medley, FL 33166 • Ph: 305.470.8284 Fax: 305.470.8285

# SERIES 2000

## Curtain Wall



### Description

- Toggle glazing system with the sought after 4 sided silicone look
- Impact Resistance (LMI)
- In multiple, twin and single span
- Design loads DP = +/- 100 PSF
- Max. span in multi and twin: 144"
- Max. span in single span: 204"
- MAX. Width: 60"
- As per FBC 2017

### Features

- Multiple pre-engineered anchoring systems
- Two part silicone (DC983) application in the shop
- Preglazed frame attached via aluminum clips
- Stick built system
- Mullions allowing a drained system in case of silicone failure
- Gaskets in silicone. Screws in stainless steel

### Glass Type

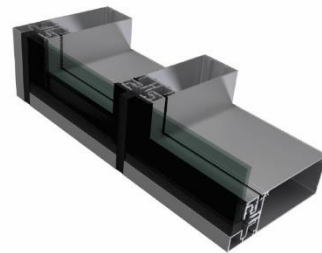
- 9/16" laminated w/0.09 SGP
- 1-5/16" glass insulated laminated w/ 0.09 SGP
- High Performance Low-e coatings

### Standard Finishes

- Bronze
- White
- Silver

### Custom Finishes

- Kynar Finish



Florida Product Approval LMI FA: FL # 26946 SMI FL # 27401

CAD Drawings available online at [www.MrGlassWindows.com](http://www.MrGlassWindows.com)



[sales@mrglasswindows.com](mailto:sales@mrglasswindows.com) • [www.mrglasswindows.com](http://www.mrglasswindows.com)  
8120 NW 84<sup>th</sup> Street, Medley, FL 33166 • Ph: 305.470.8284 Fax: 305.470.8285

# SERIES 3000

## French Door



### Description

- Impact resistance (LMI) single and double door with or without sidelites
- Available configurations: X, XX, OX, OXO, OXXO
- Design loads DP= +/- 80 PSF
- Frame depth 4"
- Maximum dimensions: 156" x 98" (FW x FH)

### Features

- Concealed 2 and 3 point lock system
- Can be prepped for industry standard hardware
- 4 hinges per panel for added strength
- Multiple glass lites per panel door (intermediate horizontals) that allow combinations of privacy glass and clear or tinted glass
- Door and added sidelites with matching top and bottom horizontal lines
- Optional raised grid for design freedom

### Glass Type

- 7/16" laminated w/ 0.09 PVB
- 15/16" glass insulated laminated
- High performance low-e coatings

### Standard Finishes

- Bronze
- White
- Silver

### Custom Finishes

- Kynar Finish
- Wood like finishes

Florida Product Approval LMI FA: FL # 26942

CAD Drawings available online at [www.MrGlassWindows.com](http://www.MrGlassWindows.com)



[sales@mrglasswindows.com](mailto:sales@mrglasswindows.com) • [www.mrglasswindows.com](http://www.mrglasswindows.com)

8120 NW 84<sup>th</sup> Street, Medley, FL 33166 • Ph: 305.470.8284 Fax: 305.470.8285